

# PRODUCT DATA SHEET

AVAILABLE THROUGH  
**TREMCO**  
 ROOFING & BUILDING MAINTENANCE

**Fibergrate**  
 Composite Structures  
 Building the World to Last™

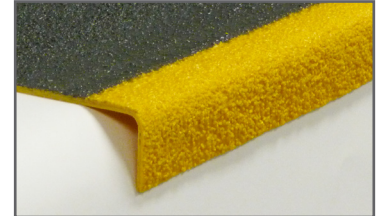
## FIBERPLATE® STAIR TREAD COVERS



Fibergrate® stair tread covers are a convenient way to provide solid, slip resistant footing for existing treads that are still structurally sound. Stair tread covers may be installed over wood, concrete or metal steps. Standard color is dark gray with a highly visible safety yellow nosing for industrial applications.

An integral aluminum oxide grit-top surface provides secure footing for maximum safety and a highly durable tread. Reinforced with a woven glass mat for durability and impact resistance, these tread

covers come in 8", 9", 10", 11" and 12" depths. The standard thickness is 1/8", with 1/4" thick covers available for heavy duty applications. Standard 12' panels are easily cut to size during installation, or are available precut to custom lengths.



### BENEFITS



Slip Resistant

The integrally applied aluminum oxide quartz grit top surface of stair treads covers have unmatched slip resistance for improved worker safety.



Low Install Cost

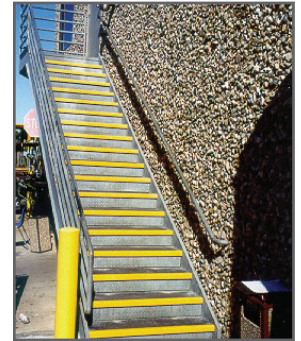
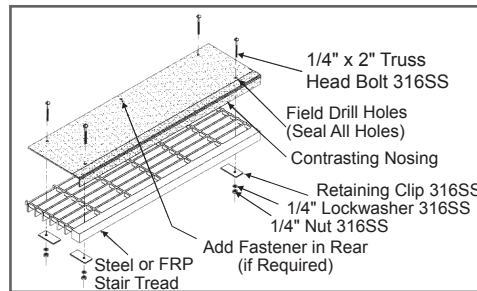
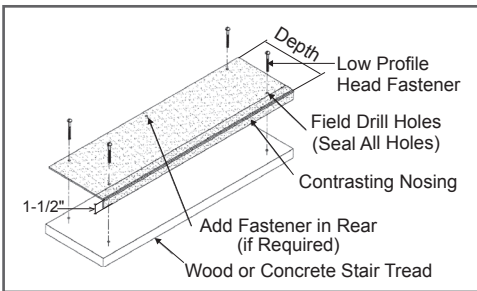
Due to ease of fabrication and lightweight, FRP stair tread covers eliminate the need for heavy lifting equipment and make installation easy.



Corrosion Resistant

Fibergrate® fiberglass stair tread covers are known for their ability to withstand the harshest environments and remain durable.

### INSTALLATION INFORMATION



### SPECIFICATIONS

#### Resin

##### Corvex®:

This newly improved isophthalic polyester resin system outperforms a number of competitive fiberglass and metal products and meets the requirements for corrosion resistance found in industrial, chemical processing and water/wastewater applications. *This upgraded formulation has replaced IFR, CP-84 and FS-25 resins.* Flame Spread: ASTM E84 rating of 25 or less. Certifications: DNV Type Approval No. F-16856; meets the USCG requirements for general fire rating\*.

\*For specific requirements and questions, please contact technical services.

#### Colors

**Dark Gray**

**Yellow**

#### Size

THICKNESS	TREAD DEPTHS	STD. LENGTH
1/8"	8", 9", 10", 11", 12"	12'
1/4"	8", 9", 10", 11", 12"	12'

#### Surface



##### Aluminum Oxide Grit:

Aluminum oxide quartz grit which is integrally applied, cured and sealed onto the surface for superior slip resistant footing

