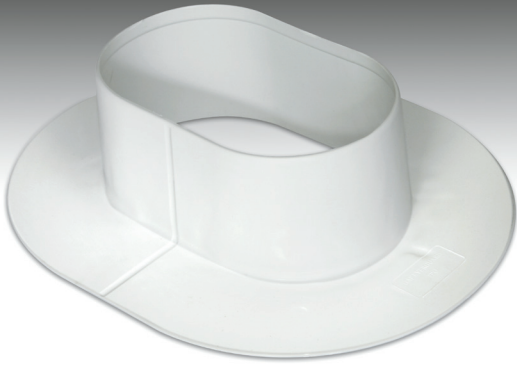


# TremPly® TPO Pourable Sealer Pocket



## ***A Molded Accessory Designed for TremPly TPO Single Ply Roof System***

### **FEATURES**

Cost effective

Factory-built accessories

Uniform look

### **BENEFITS**

Reduces installed costs by up to 25%

Improved reliability, reduces risk of leaks and callbacks

Improved aesthetics

### **OVERVIEW:**

TremPly® TPO single ply roofing system molded accessories provide roofing contractors an easy-to-install, factory-built detail. TremPly molded accessories are manufactured using a proprietary formulation designed for use with TremPly TPO single ply membranes.

### **BASIC USES:**

TremPly Pourable Sealer Pockets are molded from a proprietary TPO formulation engineered to work with TremPly TPO single-ply membranes. They eliminate the need for contractors to fabricate a pitch pocket in the field and are perfect for irregular roof penetrations.

### **COLORS:**

White

### **PACKAGING:**

Width 12", Length 15 ¼"; Wall height 4"; Box size 28" x 12" x 12", 6 Pieces per box; Weight, 6.5 lbs. per box; 16 Boxes per pallet. Pallet Size 42" x 42".

### **APPLICATION:**

TremPly TPO molded accessories are designed for use with TremPly TPO single ply membranes. The molded accessories may be installed on mechanically attached, fully adhered or self adhered TremPly TPO roofing systems using conventional techniques. See published application and specifications manual for detailed instructions.

### **MAINTENANCE:**

Your local Tremco Roofing representative can provide you with effective maintenance procedures, which may vary depending upon specific conditions. Periodic inspections, early repairs and preventive maintenance are all part of a sound roof program.

### **TECHNICAL SERVICES:**

Your local Tremco Roofing representative, working with the Technical Service Staff, can help analyze conditions and needs to develop recommendations for special applications.



7143  
3/20/18

**www.tremcoroofing.com**  
3735 Green Road  
Beachwood, Ohio 44122  
1.800.852.6013



50 Beth Neelson Drive  
Toronto, Ontario M4H 1M6  
1.800.668.9879

TremPly is a U.S. registered trademark of Tremco Incorporated.

The information provided on this data sheet is effective as of December 2017 and supersedes all previous data concerning this product and its application.

The Statements provided concerning the materials shown are intended solely as a general guide for material usage and are believed to be true and accurate. Since the manner of use is beyond our control, Tremco DOES NOT MAKE NOR DOES IT AUTHORIZE ANY WARRANTY OF MERCHANTABILITY OR FITNESS FOR ANY PURPOSE, OR ANY OTHER WARRANTY, GUARANTEE OR REPRESENTATION, EXPRESSED OR IMPLIED, CONCERNING THIS MATERIAL EXCEPT THAT IT CONFORMS TO TREMCO'S PRODUCT SAMPLE. Buyer and user accept the product under those conditions and assume the risk of any failure, injury of person or property and loss or liability resulting from the handling, storage or use of the product, whether or not it is handled, stored, used in accordance with directions or specifications. UNDER NO CIRCUMSTANCES SHALL TREMCO BE LIABLE FOR CONSEQUENTIAL OR INCIDENTAL DAMAGES ARISING FROM ANY BREACH OF WARRANTY. IN ALL CASES, TREMCO'S LIABILITY IS LIMITED, AT TREMCO'S OPTION, TO THE REPLACEMENT OF GOODS, OR THEIR VALUE, PROVEN TO BE DEFECTIVE IN MANUFACTURING.