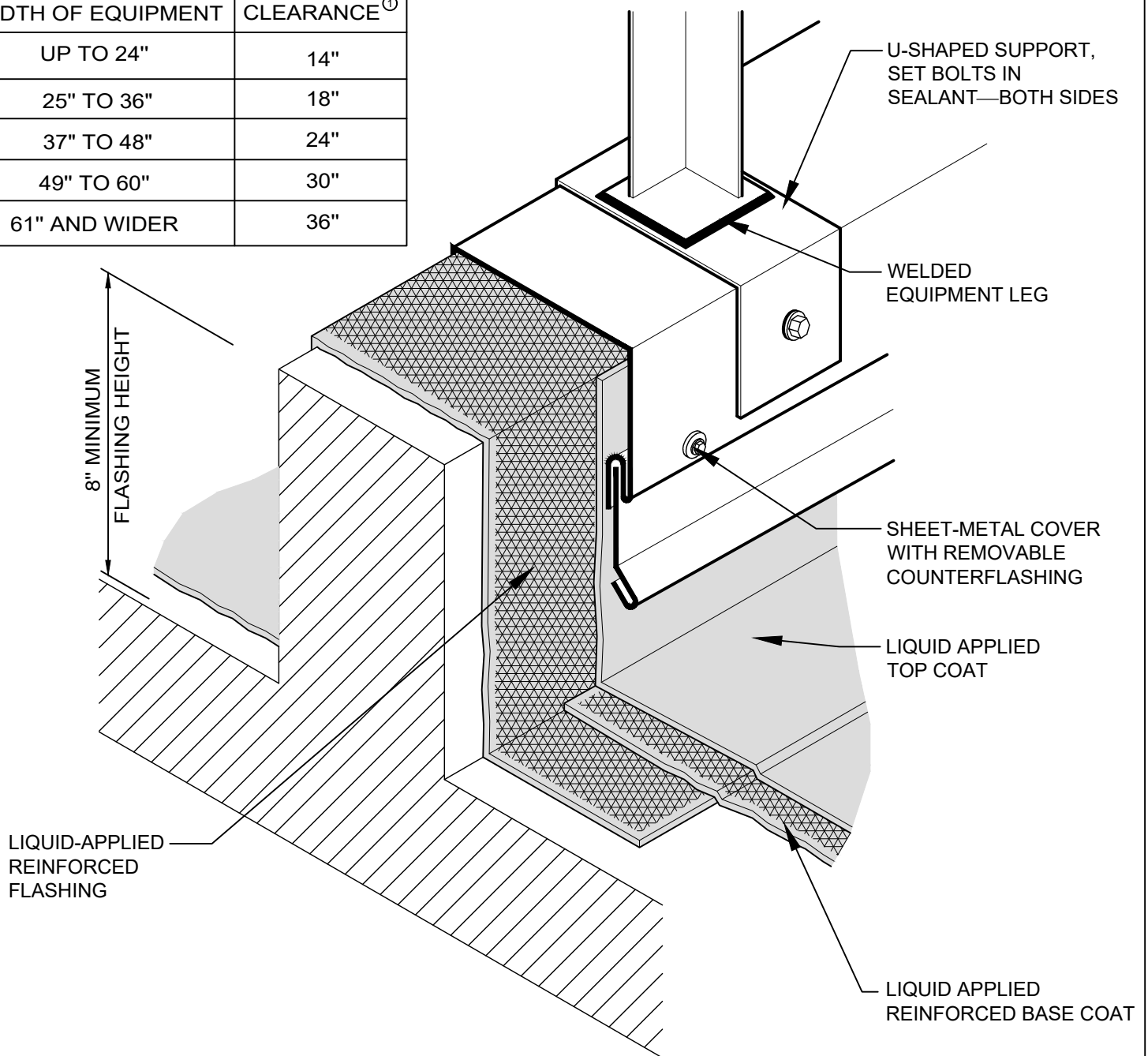


WIDTH OF EQUIPMENT	CLEARANCE ^①
UP TO 24"	14"
25" TO 36"	18"
37" TO 48"	24"
49" TO 60"	30"
61" AND WIDER	36"



NOTES

1. THIS DETAIL ALLOWS FOR MEMBRANE MAINTENANCE AROUND THE SUPPORTED EQUIPMENT. THE CONTINUOUS SUPPORT IS PREFERRED IN LIGHTWEIGHT STRUCTURAL SYSTEMS BECAUSE THE EQUIPMENT WEIGHT CAN BE SPREAD ACROSS TWO OR MORE SUPPORTING MEMBERS. WHERE HEAVY STRUCTURAL SYSTEMS ARE USED OR WHERE THE LOAD CAN BE CONCENTRATED OVER A COLUMN, DETAIL LA-CFR-11 MAY BE PREFERRED. A MINIMUM OF 2 FEET OF HORIZONTAL CLEARANCE MUST BE PROVIDED FOR REMOVAL AND REPLACEMENT OF ROOFING AND FLASHING BETWEEN PARALLEL SUPPORTS. REFER TO THE TABLE ABOVE FOR RECOMMENDATIONS ON VERTICAL CLEARANCE FROM ROOF SURFACE TO BOTTOM OF SUPPORTED EQUIPMENT.
2. FLASHING REQUIREMENTS TYPICAL FOR BOTH SIDES OF CURB.
3. PRIMING OF THE SUBSTRATE MAY BE REQUIRED. FOLLOW SPECIFICATIONS AND MANUFACTURER'S RECOMMENDATIONS.



SHEET TITLE:
**BASE FLASHING AT LIGHTWEIGHT
 EQUIPMENT SUPPORT CURB FULLY
 REINFORCED OVER CONCRETE**

SCALE:
 NTS

DRAWING No.:
DWG NO. LA-CFR-10