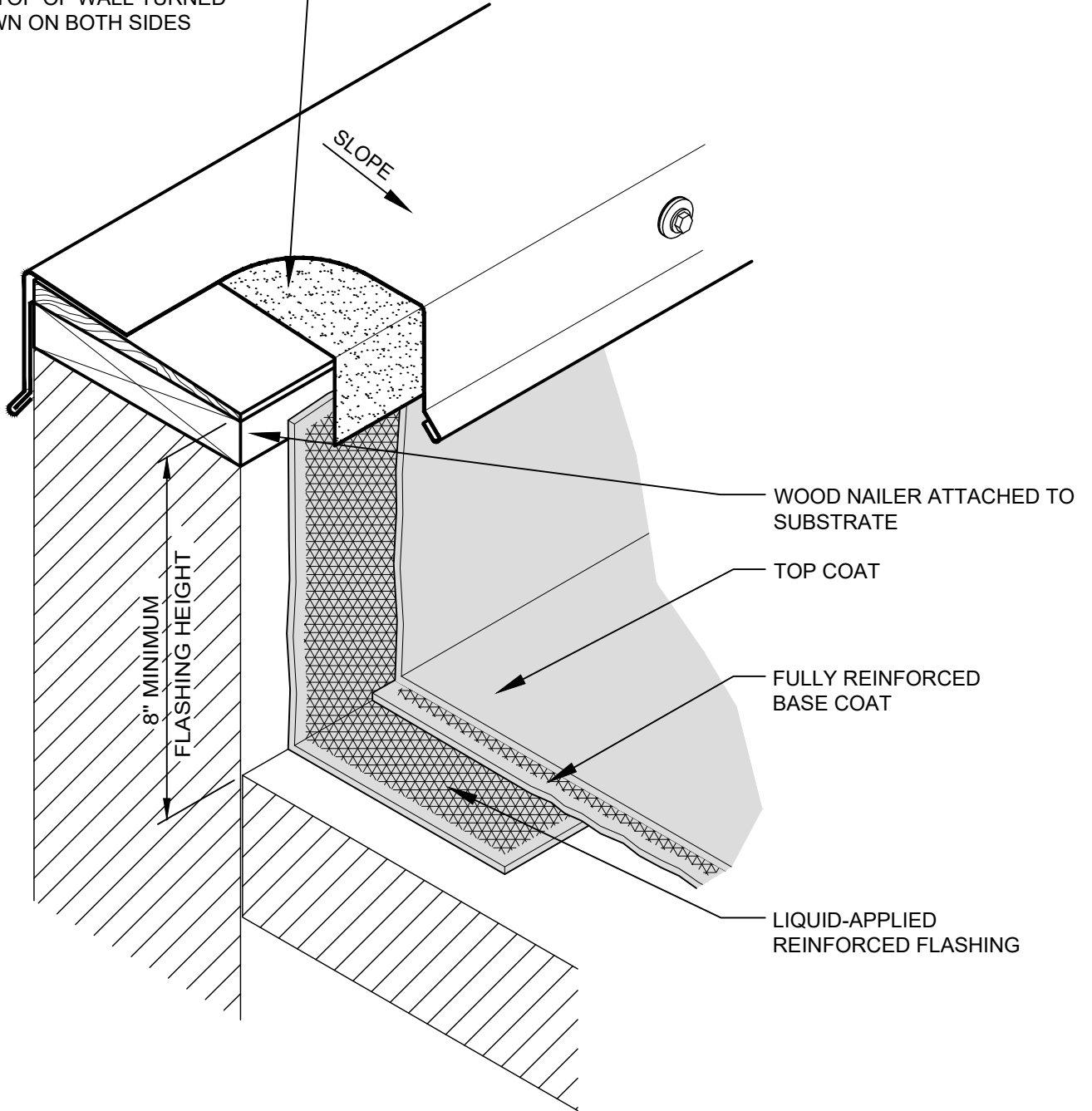


CONTINUOUS WEATHERPROOF MEMBRANE ON TOP OF WALL TURNED DOWN ON BOTH SIDES



NOTES

1. THIS DETAIL DOES NOT ALLOW FOR DIFFERENTIAL MOVEMENT BETWEEN THE DECK AND WALL. SEE DETAIL LA-CFR-7 FOR EXPANSION JOINT AT A DECK AND WALL LOCATION.
2. PRIMING OF THE SUBSTRATE MAY BE REQUIRED. FOLLOW SPECIFICATIONS AND MANUFACTURER'S RECOMMENDATIONS.



SHEET TITLE:
**BASE FLASHING AT PARAPET WALL
 WITH METAL COPING FULLY
 REINFORCED OVER CONCRETE**

SCALE: **NTS**
 DRAWING No.: **DWG NO. LA-CFR-01**