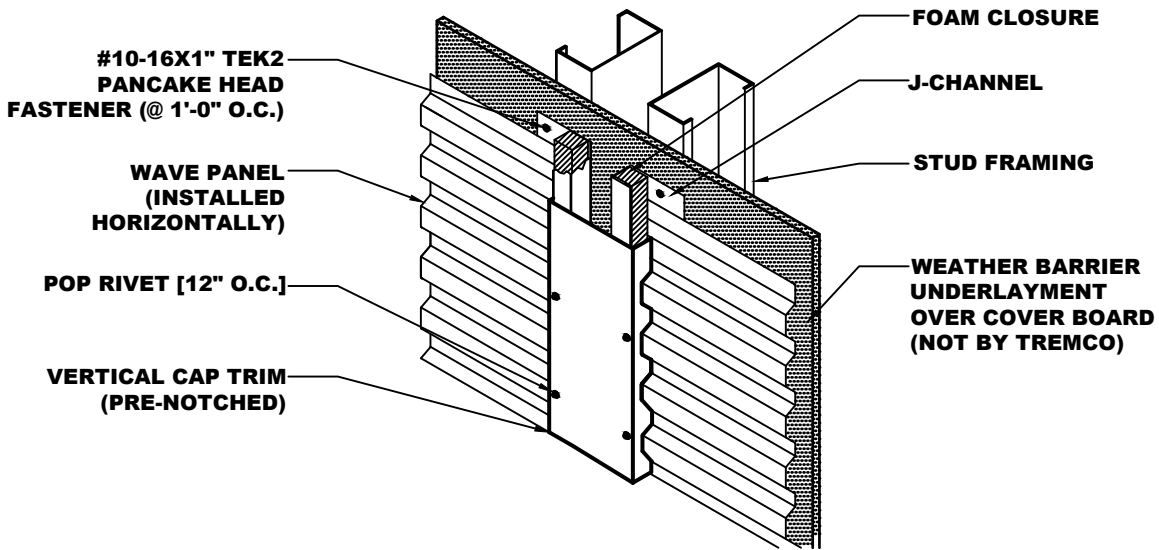


- NOTES:**
1. Attach J-Channel to Wall Structural Member with Framing Fasteners
  2. Install Wave Panel with Pre-Installed closures onto J-channel.
  3. Install Wave Panel Revile Trim with pop rivets at 12" o.c.



\*NOTE: SOME TRIM ITEMS AND FASTENERS HAVE BEEN REMOVED FOR CLARITY OF ISOMETRIC DETAIL.