

**FLEXX PANEL PROFILE**  
Width- 16"

**Applications**

Concealed fastener "hook & cleat" interlocking panel (symmetrical horizontal ribs) used on wall applications.

**Substrates**

Plywood, Nailers, Hat Channels, Subgirts, Purlins

**Material**

Standard - 24 ga. Steel  
Optional - 22 ga. Steel

**Finishes**

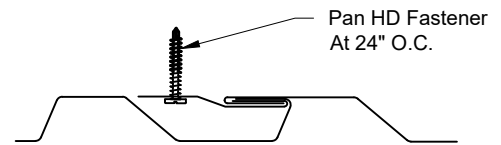
Acrylic Coated Galvalume  
Fluoropolymer (Kynar 500® PVDF resin-based)

**Manufacturing**

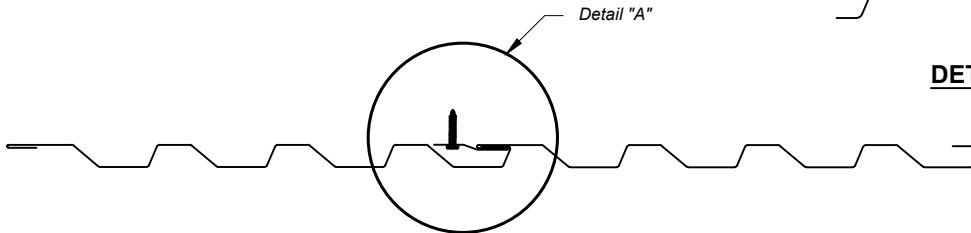
Roll formed in factory.

**Testing/Agency Approvals**

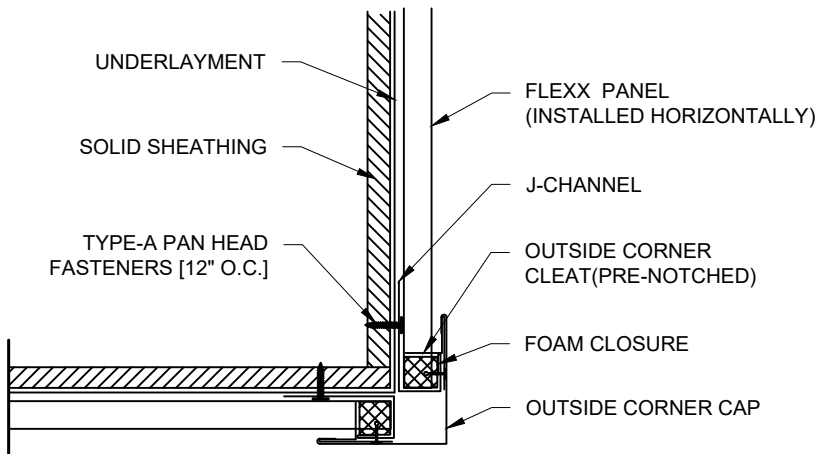
Uplift: ASTM E-1592



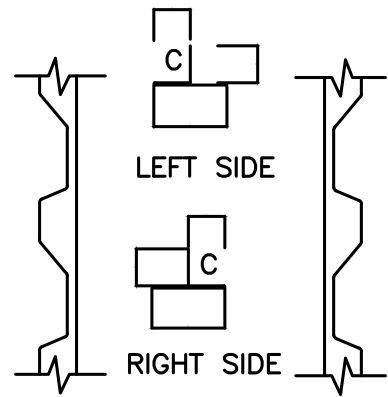
**DETAIL "A"**



**SEAM ENGAGEMENT**



**OUTSIDE CORNER DETAIL**



**OUTSIDE CORNER CLEAT (PRE-NOTCHED)**  
**ENLARGED OUTSIDE CORNER CLEAT DETAIL**



SHEET TITLE:

TREMLOCK FLEXX WALL PANEL

SCALE:

NTS

DRAWING No.:

DWG NO. 04