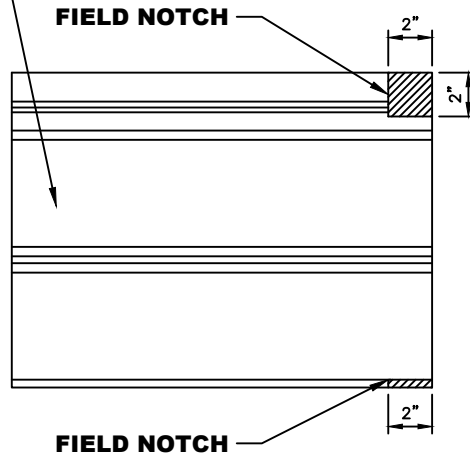


**MATRIX PANEL
(HORIZONTAL APPLICATION)**

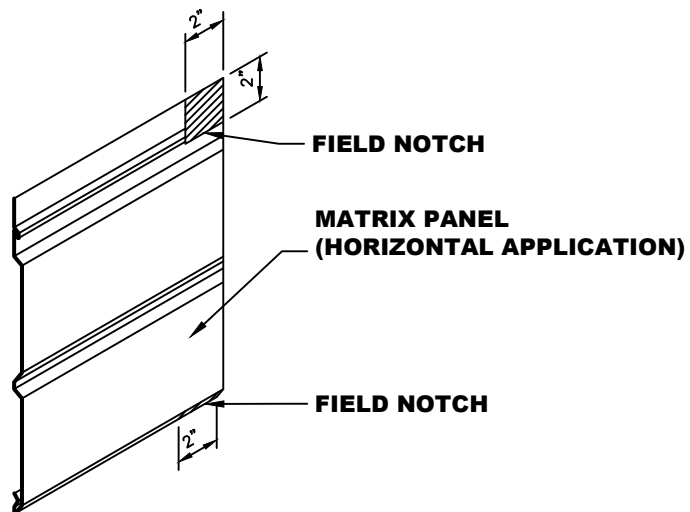


**MALE
LEG**

**FEMALE
LEG**

PROFILE VIEW

- NOTES:** 1. Field notch male leg 0'-2" from end of panel and 0'-2" from edge of panel.
2. Field notch female leg 0'-2" from end of panel.



ISOMETRIC VIEW