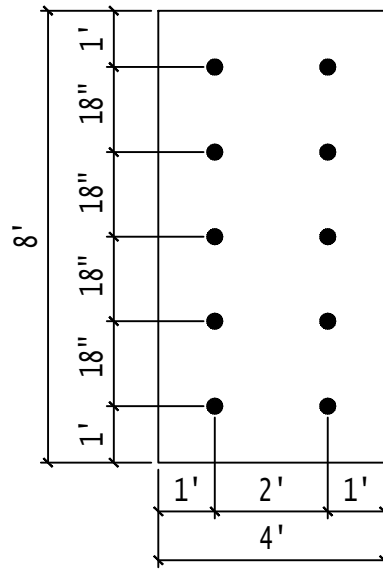
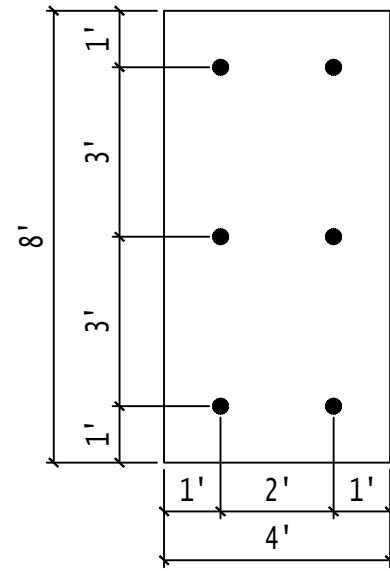


(CORNER)
16 PER BD.

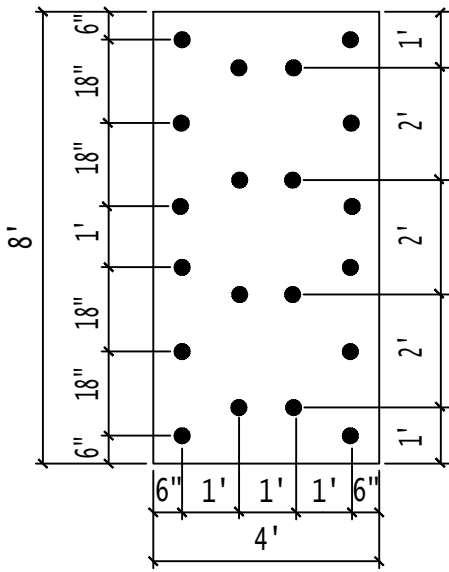


(PERIMETER)
10 PER BD.

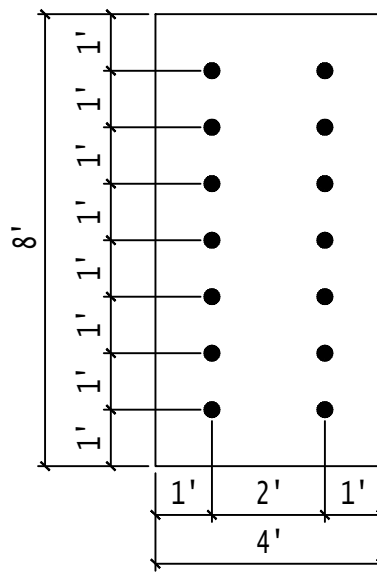


(FIELD)
6 PER BD.

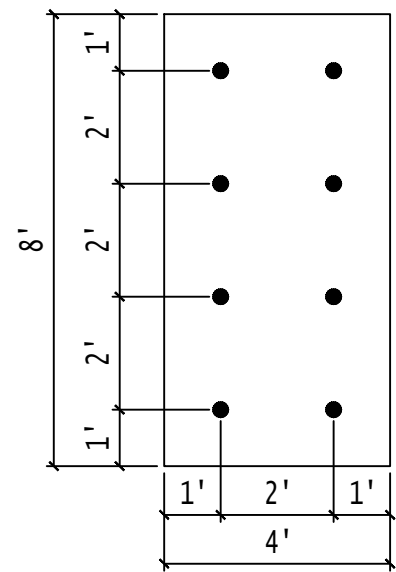
**2' X 3' INDUCTION WELD FASTENING PATTERN : FIELD, PERIMETER & CORNER ATTACHMENT
CLASS 1-90 RATING**



(CORNER)
20 PER BD.



(PERIMETER)
14 PER BD.



(FIELD)
8 PER BD.

**2' X 2' INDUCTION WELD FASTENING PATTERN : FIELD, PERIMETER & CORNER ATTACHMENT
CLASS 1-135 RATING**



SHEET TITLE:

INDUCTION WELD
ATTACHMENT METHODS

SCALE:

NTS

DRAWING No.:

DWG NO. 57